

Quick Facts Athol, Massachusetts

POPULATION

2015 Population **11,584**

Growth rate 2000-2010 **2.5%**

Projected Growth Rate 2015-2030 **6%**

ECONOMIC INDICATORS

Median Household Income \$46,954

Average Household Income \$56,417

People living below poverty 15.8%

Unemployment Rate 6.7%
(down from 11% in '11)

% High School or Higher 83.8%

% Bachelors or Higher 13.5%

Top Employers

LS Starrett Co.	Whipps Inc
Athol Hospital	Adams Farm
Hannaford	Athol Credit Union
Market Basket	Athol Savings Bank
Quabbin Val. Healthcare	Girardi Distributors
N. Quabbin Physicians	KEO Milling Cutters

HOUSING

Owner-occupied 71% Renter-occupied 29%



Vacancy Rate (2010) 11% (but declining)

Avg Sale Price 2013 \$118,400 (20% increase from '11)

Property Tax Rate 19.0%

Government Open Town Meeting;
Board of Selectmen;
Town Manager.

History Settled in 1735 as
Pequoig; Incorporated as
Athol in 1762.

Area Total 33.07 sq miles

County Worcester

Schools Athol RoyalstonRegional
School District

Major Routes Route 2; Route 32

Top Employment Sectors

Education & Health Care 27.5%

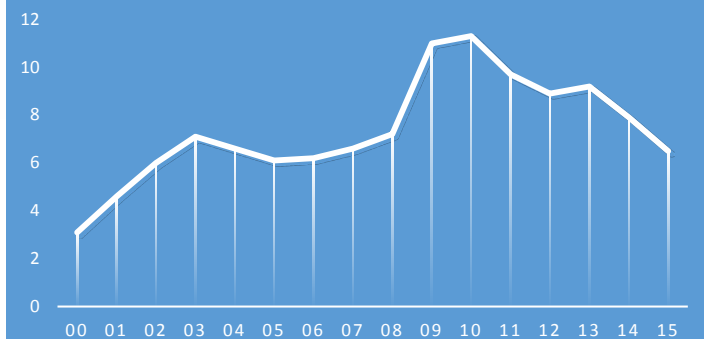
Manufacturing 19.7%

Retail Trade 12.5%

Professional, Sci, Mgmt 5.6%

Finance, Insur, Real Estate 5.5%

UNEMPLOYMENT RATE, '00-'15, ATHOL MA



AMENITIES

- State-of-the-art LEED Certified Public Library
- Smaller neighborhood parks to thousand+ acre conservation lands
- YMCA, New England Equestrian Center of Athol, Millers River Environmental Center
- Media: Athol Daily News, Athol-Orange Community Television, WJDF Radio
- Transportation: FRTA and MART Bus Transit; CTS (Community Transit Services); Orange Airport